

HM 170 Open wind tunnel

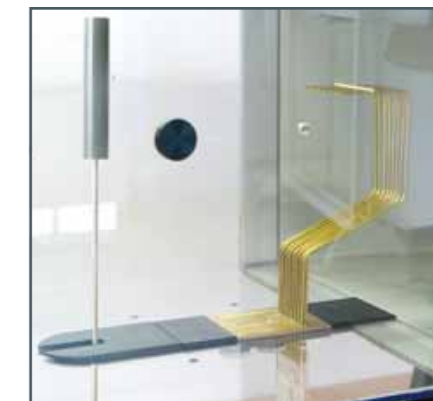
GUNT offers an "Eiffel" type open wind tunnel as a classic experimental plant in the field of flow around bodies.

The flow medium of air is brought up to the desired velocity by a fan and flows around the model being studied in a meas-

uring section. Additional experiments, such as investigation of the boundary layer or pressure distribution of drag bodies immersed in a flow are available as options.



The new design of the open wind tunnel HM 170



HM 170.28
Measurement of the wake of a cylinder immersed in a flow and demonstration of a wake depression, wake rake consisting of 15 Pitot tubes



Training at the HM 170 Open wind tunnel at the Technical College for Aeronautical Engineering in Hamburg (Germany)



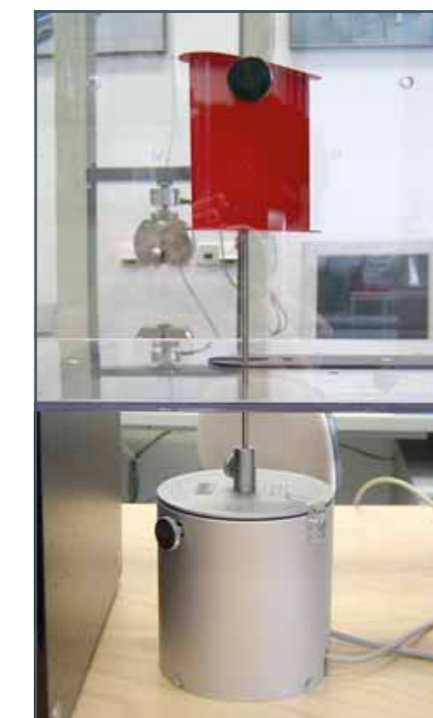
Measuring lift and drag forces as a function of the angle of attack of an aerofoil with flap and slot



Measuring lift and drag forces on the streamlined body with the two-component force sensor



Pressure distribution on an aerofoil immersed in a flow



Measuring lift and drag forces and moment on the aerofoil drag body with the three-component force sensor HM 170.40